



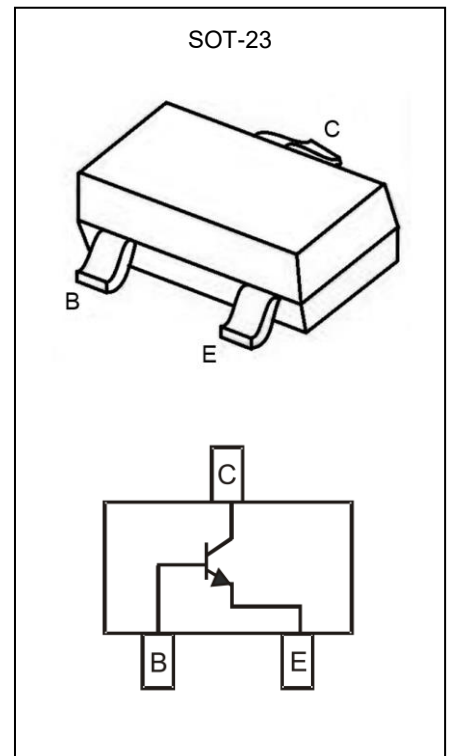
2SC2712 Transistor(NPN)

Feature

- Audio Frequency General Purpose Amplifier Applications
- Low Noise: NF=1 dB (Typ),10dB(MAX)

MAXIMUM RATINGS (T_a=25°C unless otherwise noted)

Parameter	Symbol	Value	Unit
Collector-Base Voltage	V _{CB0}	60	V
Collector-Emitter Voltage	V _{CEO}	50	V
Emitter-Base Voltage	V _{EB0}	5	V
Collector Current -Continuous	I _c	0.15	A
Collector Power Dissipation	P _c	0.15	W
Junction Temperature	T _J	150	°C
Storage Temperature	T _{STG}	-55~ +150	°C

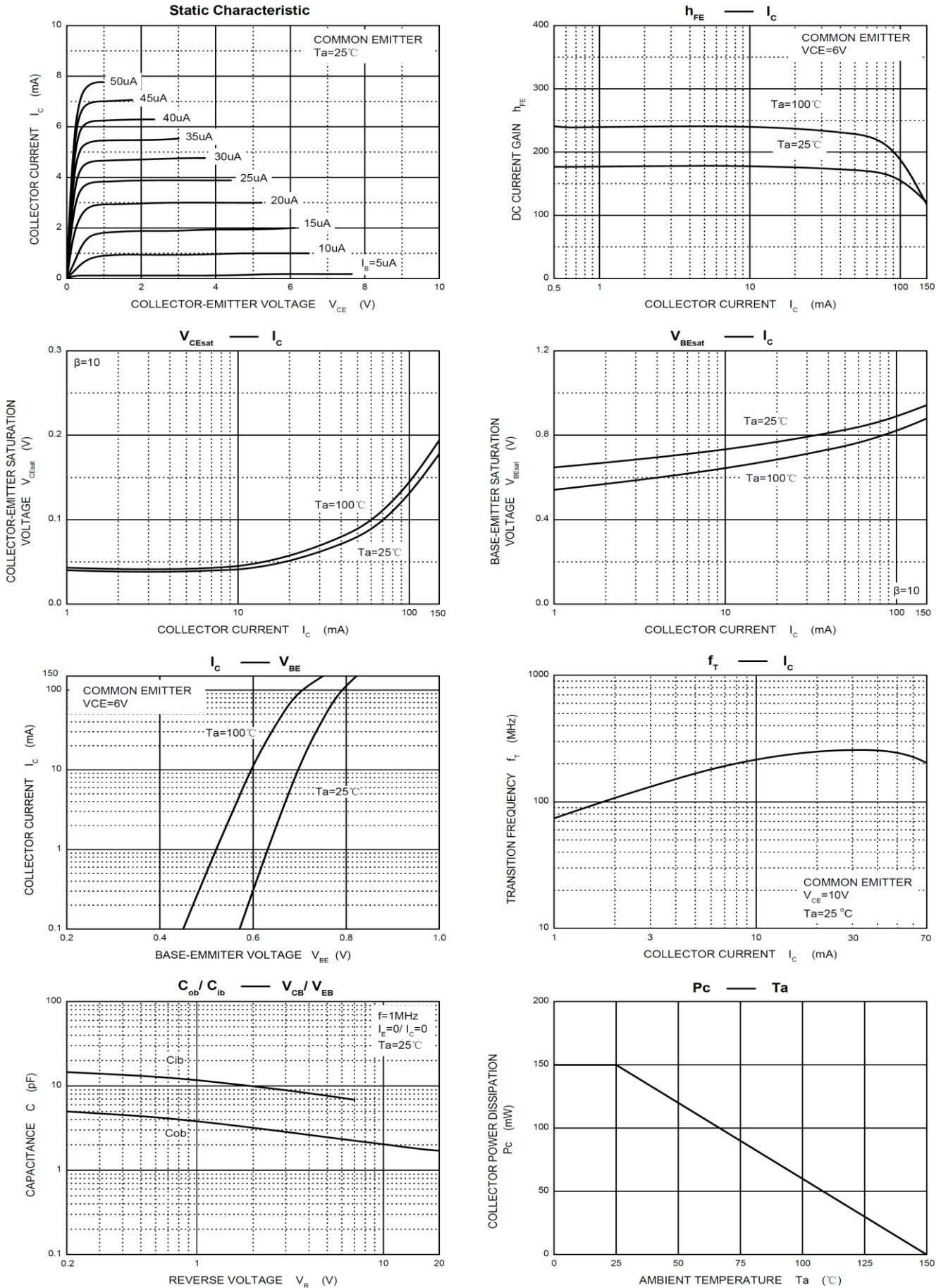


ELECTRICAL CHARACTERISTICS(T_a=25°C unless otherwise noted)

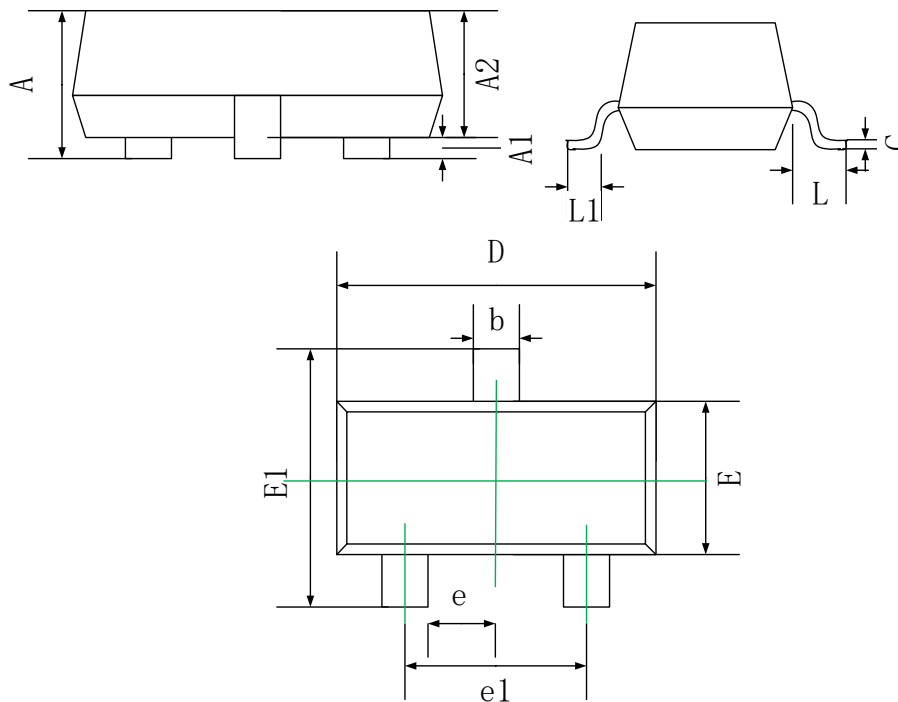
Parameter	Symbol	Test Condition	Min	Max	Unit
Collector-base breakdown voltage	V _{(BR)CBO}	I _c =100μA ,I _E =0	60		V
Collector-emitter breakdown voltage	V _{(BR)CEO}	I _c =1mA , I _B =0	50		V
Emitter-base breakdown voltage	V _{(BR)EBO}	I _E =100μA,I _c =0	5		V
Collector cut-off current	I _{CBO}	V _{CB} =60V, I _E =0		0.1	μA
Emitter cut-off current	I _{EBO}	V _{EB} =5V, I _c =0		0.1	μA
DC current gain	h _{FE}	V _{CE} =6V, I _c =2mA	70	700	
Collector-emitter saturation voltage	V _{CE(sat)}	I _c =0.1A, I _B = 0.01A		0.25	V
Noise Figure	NF	V _{CE} =6A, I _c = 0.1mA,f=1KHZ, R _g =10kΩ		10	dB
Transition frequency	f _t	V _{CE} = 10V, I _c =1mA	80		MHZ

Rank	O	Y	GR	BL
Range	70~140	120~240	200~400	350~700
Marking	LO	LY	LG	LL

Typical Characteristics

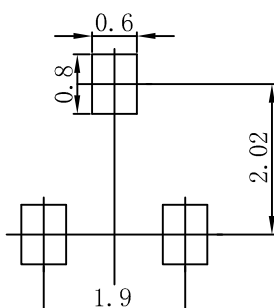


SOT-23 Package Information



Symbol	Dimensions In Millimeters	
	Min.	Max.
A	0.90	1.15
A1	0.00	0.10
A2	0.90	1.05
b	0.30	0.50
c	0.08	0.15
D	2.80	3.00
E	1.20	1.40
E1	2.25	2.55
e	0.95 REF.	
e1	1.80	2.00
L	0.55 REF.	
L1	0.30	0.50

SOT-23 Suggested Pad Layout



Note:

1. Controlling dimension: in millimeters.
2. General tolerance: $\pm 0.05\text{mm}$.
3. The pad layout is for reference purposes only.